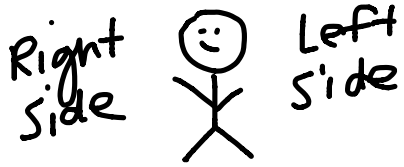


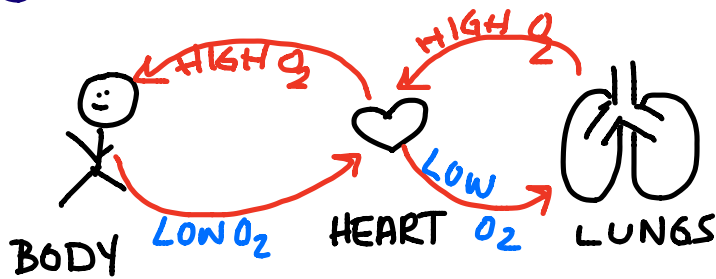
The Human Heart




* When a person faces you, their R + L seems reversed.

* The heart is viewed as if it's in a person you're operating on.

Circulation in the Body

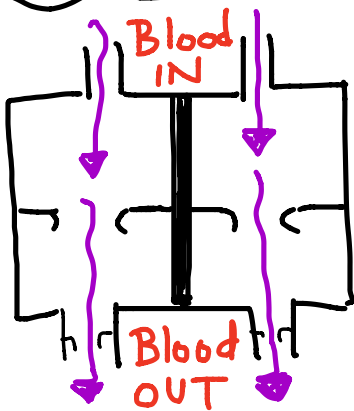


Blood cycles between the LUNGS + the BODY, but it goes through the  each way to get a push.

LOW O₂ = oxygen-poor (BLUE)
HIGH O₂ = oxygen-rich (RED)

Really, Really SIMPLE HEART

The BASIC structure of the heart

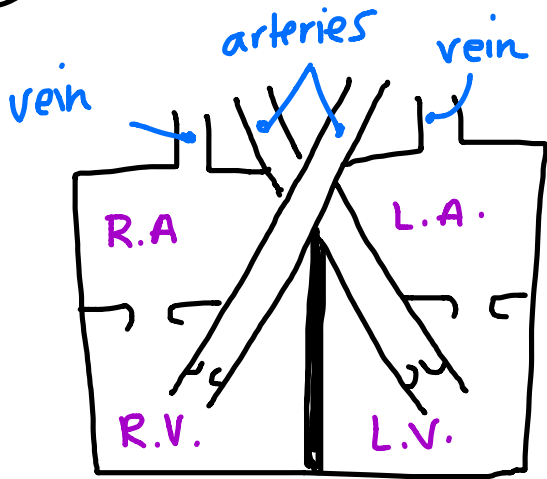


4 Chambers = the "rooms" that fill w/ blood

4 Vessels = the tubes that carry blood in + out

4 Valves = "swinging doors" prevent blood flow backwards

Not-So-Simple Heart



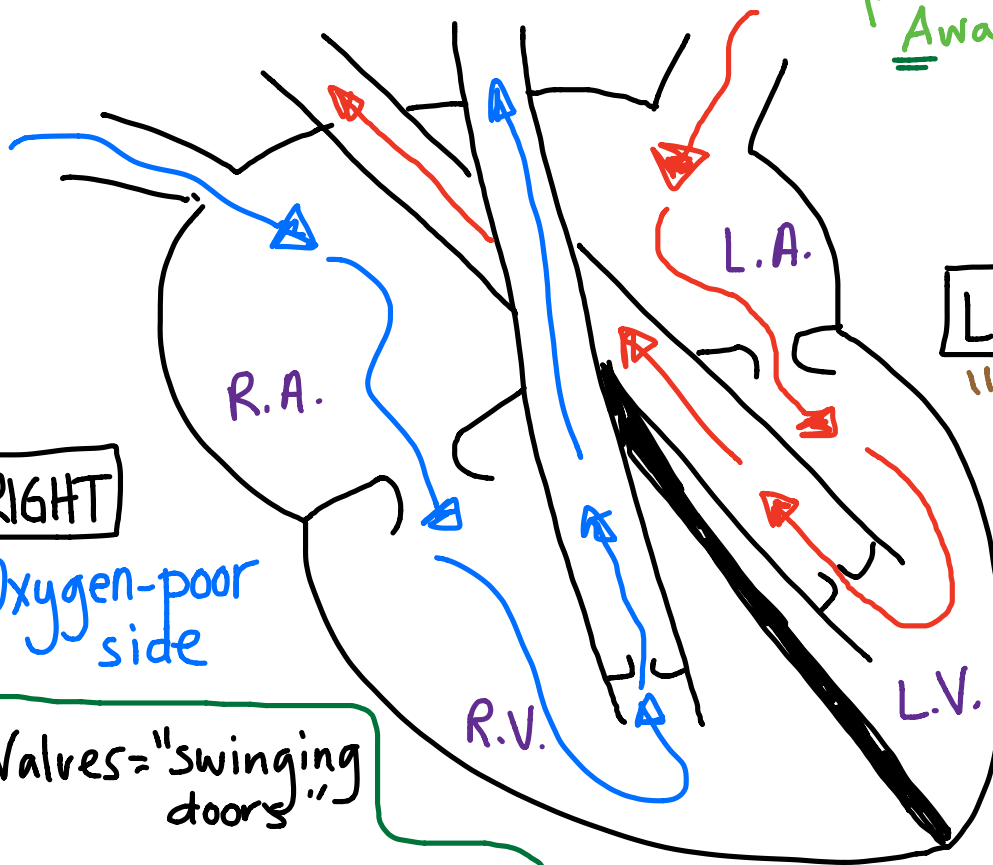
Chambers:

Atria = upper chambers
(Atrium is singular)
Ventricles = lower chambers

Vessels:

Veins = carry blood TO ♡
Arteries = carry blood AWAY from ♡

Away = Arteries



RIGHT

Oxygen-poor side

LEFT

"Left-rich, Westrich"

O₂-rich is on the LEFT!!

